

SVENDBORG BRAKES, DENMARK  
 CVR / VAT: 13256438  
 WWW.SVENDBORGBRAKES.COM

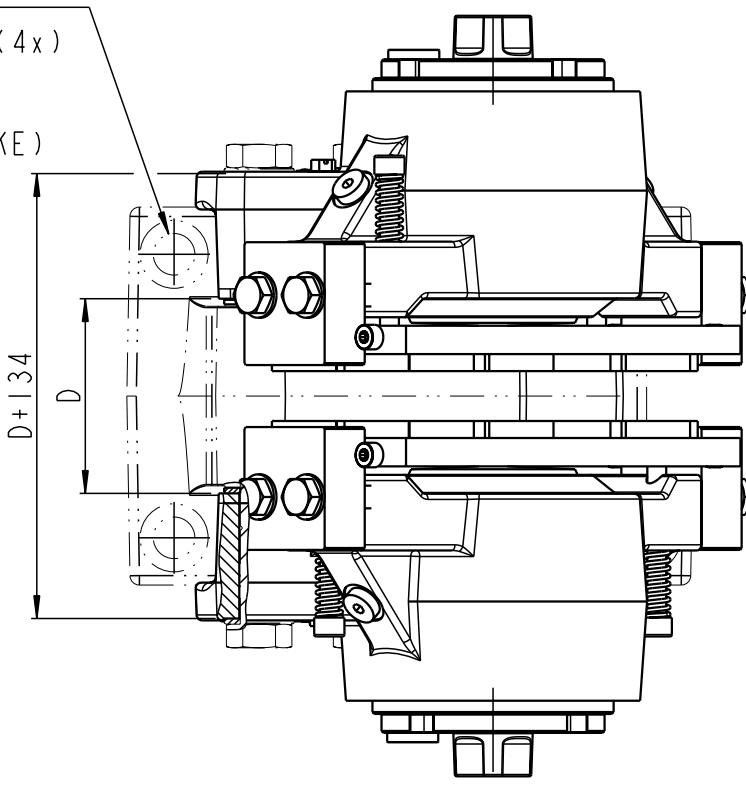
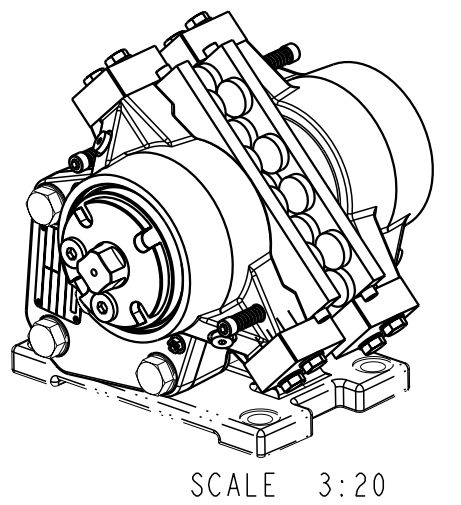
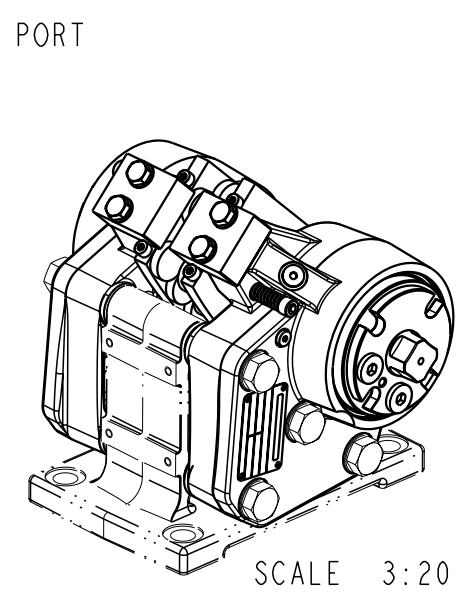
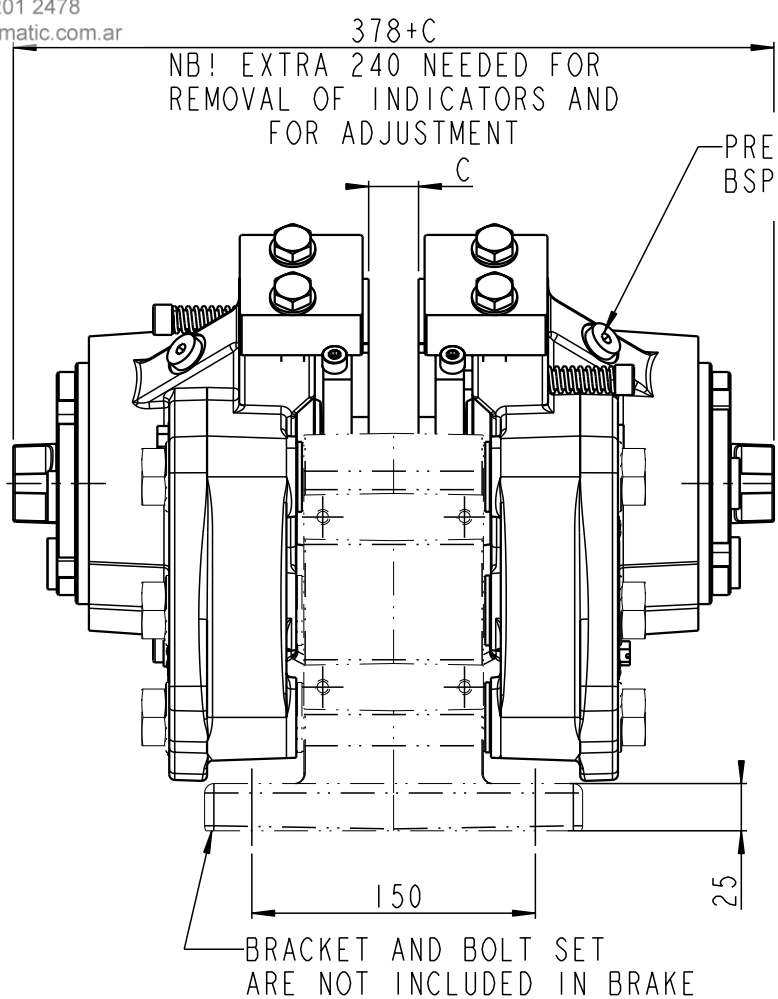
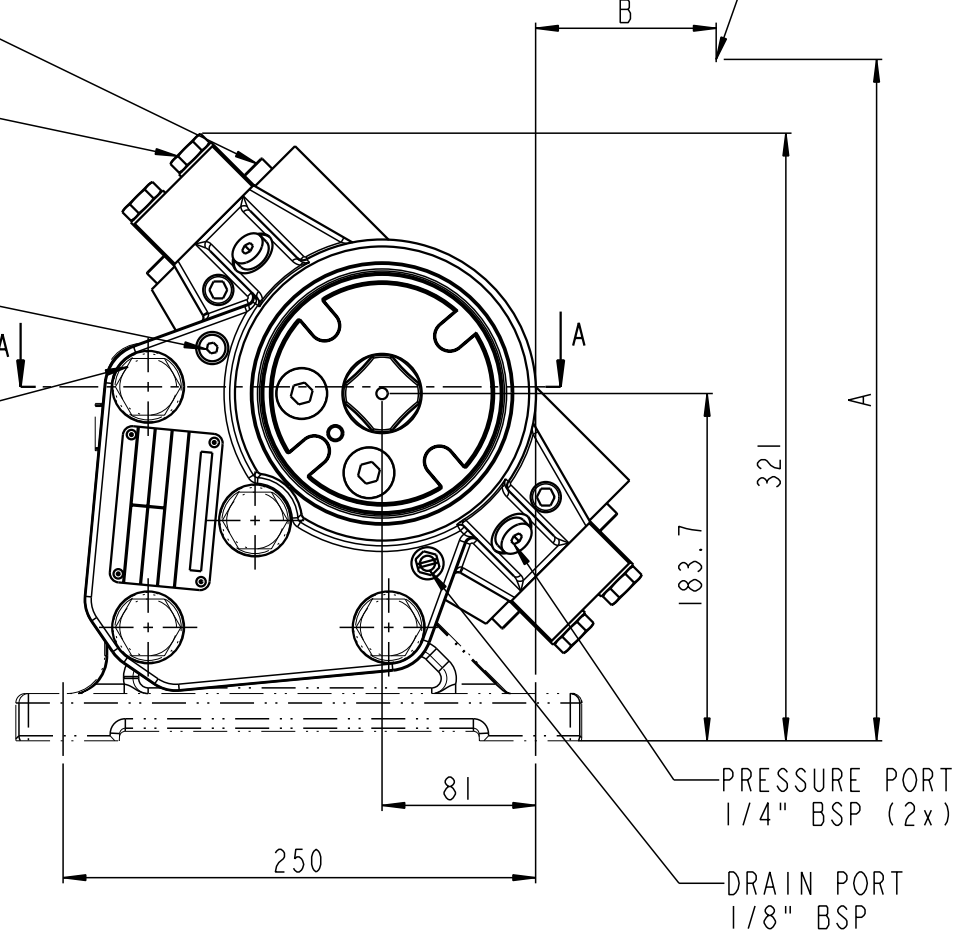
BOLTS M8 GRADE 8.8  
 $M_v = 23 \pm 2 \text{ Nm}$   
 DRY

BOLTS M12 GRADE 10.9  
 $M_v = 91 \pm 8 \text{ Nm}$   
 WITH MoS 2

DRAIN PORT  
 1/8" BSP

BOLTS FOR BRAKES SMALLER  
 THAN BSFI 350:  
 M20 GRADE 8.8  
 $M_v = 305 \pm 20 \text{ Nm}$  WITH MoS2  
 BOLTS FOR BRAKES BSFI 350  
 AND LARGER:  
 M20 GRADE 10.9  
 $M_v = 430 \pm 20 \text{ Nm}$  WITH MoS2

$\varnothing 22$  (4x) FOR  
 BOLTS M20 GRADE 8.8 (4x)  
 $M_v = 305 \pm 20 \text{ Nm}$   
 WITH MoS2  
 (NOT INCLUDED IN BRAKE)



A = (DISC RADIUS + 195) x 0,707  
 B = A - 265  
 C = DISC THICKNESS  
 D = C+77  
 CALIPER HERE SHOWN WITH 25MM THICK DISC  
 MOUNTING DATA, SEE DRAWING 490-2349

Tolerances for internal and external radii, angles and chamfers according to: ISO 2768 - mK	Indicates Ra in $\mu\text{m}$	All dimensions in mm	Drawing status
	Description		<b>Released</b>
Drawn by R.R. HANSEN	BSFI 300-S-200		
Date: 22-06-00	Drawing No.		Scale 1:4 (A3)
		490-2293	Sheet 1 of 1 sheets

THIS DRAWING/DRAWING DOCUMENT REMAINS THE PROPERTY OF SVENDBORG BRAKES AND MUST NOT BE COPIED WITHOUT OUR PRIOR WRITTEN PERMISSION. AND THE CONTENTS THEREOF MUST NOT BE DISCLOSED TO ANY THIRD PARTY. NOR BE USED FOR ANY UNAUTHORIZED PURPOSE. LEGAL ACTION WILL BE TAKEN IN THE EVENT OF CONTRAVENTION.